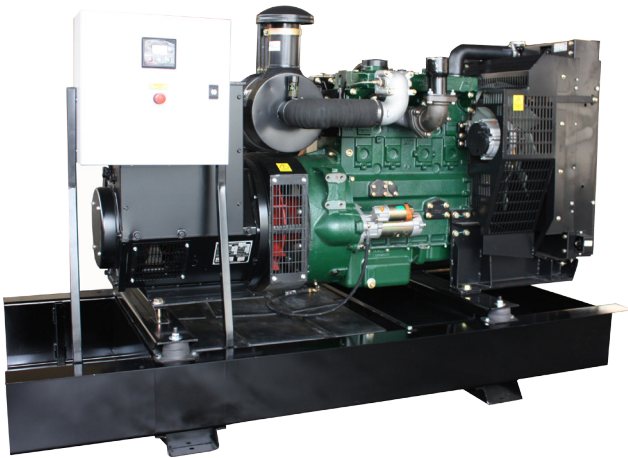




WELLING & CROSSLEY

100 kVA

MODEL: ED100CY/3



Powered by **CROSSLEY**
DIESEL ENGINES

Image may vary from actual model.

THE DIESEL GENERATOR EXPERTS

Welling & Crossley is Australia's largest diesel generator and engine specialist. Australian owned and operated since 1926, Welling & Crossley is an internationally recognised Australian leader in the manufacture and supply of diesel generating sets for industrial or commercial applications. Also available is a complete range of portable generators, inverter generators, back up generators, diesel engines and fire products.

We have the expertise to provide sound advice on your power generating needs. Whether your requirements are prime (continuous) power or standby power applications, you can choose from our standard build sets, or we can tailor to suit your application requirements.

Alternator

Crossley SLG Series Alternators are single bearing, 4-pole, with a brushless, rotating field design and are self-excited with power derived from main output windings using the Automatic Voltage Regulator (AVR). Manufactured using the highest quality copper and steel with all laminations impregnated with epoxy resins, the SLG Series are of a modern design with a precision AVR that allows overloads of 10% for one hour in 12, and overloads for motor starting and short circuit protection of up to 300%. Available in either Single Phase (240V), 2-Phase (480V) or 3-Phase (415V).

The Generating Set

The complete generating set is mounted as a whole onto a heavy duty fabricated steel baseframe. Anti-vibration pads are fixed between the engine and alternator feet, and the baseframe, ensuring complete vibration isolation of the rotating assembly.

Stringent factory tests are carried out on the generating set, with a full load test completed prior to despatch. All protective devices, control functions and site load conditions are simulated. The generator and its systems are thoroughly checked prior to leaving our factory. Warranty on the genset is for 12 months or 1000 hours from date of supply (whichever occurs first) and covers against faulty workmanship, materials and design.

Engine

The Crossley range of diesel engines are heavy duty and specially built for industrial applications. They are water radiator cooled and come in four stroke, with Turbo engines available. The engines are fitted with a highly efficient noise-reducing silencer and governed to a fixed speed of 1500rpm.

Control System

The control starting system is fitted standard. Starting is remote or local to the machine with push Start/Stop button and includes the following digital indicators:

- Oil Pressure
- Engine Temperature
- Frequency
- Volts and Amps
- Shut Down for low oil & temperature
- Emergency stop button
- Output circuit breaker
- Static Battery Charger

The control system can also be configured to operate with an Automatic Transfer Switch with logic.

www.wellcross.com.au

MODEL: ED100CY/3

ENGINE SPECIFICATIONS

Engine Model	Crossley 4053
Engine Speed	1500 rpm
Cylinders	4 T
Cubic Capacity	5.22 L
Bore/Stroke	112 x 135 mm
Compression Ratio	15 : 1
Aspiration	Turbocharged, Aftercooled
Starter Voltage	24 V
Flywheel (Max. Continuous Power)	110 kW
Combustion Air Flow	7.7 m ³ /min
Cooling Air flow	200 m ³ /min
Cooling System	Radiator Cooled
Heat Rejection to Cooling System	100 kW
Exhaust Gas Flow	22 m ³ /min
Exhaust Gas Temperature	550 °C
Fuel Type	Diesel
Fuel Tank Capacity	130 L
Fuel Consumption (Continuous)	29 L/h
Fuel Consumption (Standby)	31 L/h

Note: Standby reference conditions 27°C (80°F) air inlet temperature 152.4 m (500ft) ASL. All engine performance data based on the above mentioned maximum continuous ratings. Fuel consumption data at full load with diesel fuel with a specific gravity of 0.85 and conforming to BS29869:1988, Class A2.

Canopy Option (CB Canopy)

A weather protective acoustic enclosure may be fitted as optional, to protect and prolong the life of your generator. Constructed of galvanised steel sheet that is cleared and finished using a powdercoat paint finish, this acoustic canopy will reduce the noise level of the generating set to approximately 80 dB(A) at 1 metre from the machine (73 dB(A) @ 7 m).



Requires 800 mm access (width) to open doors, and the exhaust protrudes 300 mm above the canopy. Canopy Weight: 700 kg.
Dimensions: 2865 mm (L) x 1020 mm (W) x 1760 mm (H)

Specifications are subject to variation without notice.

Powered by **CROSSLEY**
DIESEL ENGINES

ALTERNATOR SPECIFICATIONS

Alternator Model	Crossley SLG 274L
Electric Power	Three Phase
Active Power	100kVA at 0.8 pf (Standby)
Power	80 kW
Electric Potential	415 V
Frequency	50 Hz

These ratings are applicable for supplying continuous electrical power at variable load in the event of a utility power failure. No overload is permitted on these ratings.

GENERATOR SPECIFICATIONS

Dimensions (L x W x H)	2100 x 980 x 1400 mm
Weight	1600 kg

Design Features

- Heavy duty fabricated steel baseframe
- Bunded Fuel Tank (AS1940-2004 compliant)
- Battery Charger
- Control Panel with Emergency Stop button
- Prime or Standby Power

Optional Extras

- Additional Protection Alarms
- Jacket Heater
- Automatic Transfer Switch (ATS)
- Control System (remote Start/Stop) with Mains Failure option
- Weather protected acoustic canopy
- Trailer mounted
- Load Banks
- Auxiliary Fuel Tanks
- Genuine Spare Parts

Special Builds Welcome!

VICTORIA NEW SOUTH WALES QUEENSLAND SOUTH AUSTRALIA WESTERN AUSTRALIA

 1300 656 276

www.wellcross.com.au