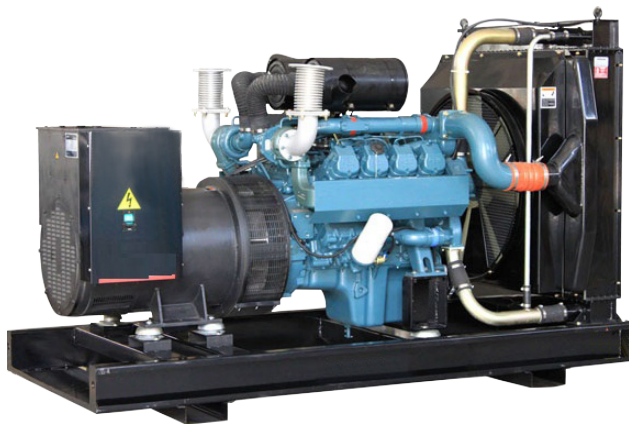


470 kVA

MODEL: ED470DSE/3



Powered by **DOOSAN**

Image may vary from actual model.

THE DIESEL GENERATOR EXPERTS

Welling & Crossley is Australia's largest diesel generator and engine specialist. Australian owned and operated since 1926, Welling & Crossley is an internationally recognised Australian leader in the manufacture and supply of diesel generating sets for industrial or commercial applications. Also available is a complete range of portable generators, inverter generators, back up generators, diesel engines and fire products.

We have the expertise to provide sound advice on your power generating needs. Whether your requirements are prime (continuous) power or standby power applications, you can choose from our standard build sets, or we can tailor to suit your application requirements.

Alternator

Crossley SLG Series Alternators are single bearing, 4-pole, with a brushless, rotating field design and are self-excited with power derived from main output windings using the Automatic Voltage Regulator (AVR). Manufactured using the highest quality copper and steel with all laminations impregnated with epoxy resins, the SLG Series are of a modern design with a precision AVR that allows overloads of 10% for one hour in 12, and overloads for motor starting and short circuit protection of up to 300%. Available in either Single Phase (240V), 2-Phase (480V) or 3-Phase (415V).

The Generating Set

The complete generating set is mounted as a whole onto a heavy duty fabricated steel baseframe. Anti-vibration pads are fixed between the engine and alternator feet, and the baseframe, ensuring complete vibration isolation of the rotating assembly.

Stringent factory tests are carried out on the generating set, with a full load test completed prior to despatch. All protective devices, control functions and site load conditions are simulated. The generator and its systems are thoroughly checked prior to leaving our factory. Warranty on the genset is for 12 months or 1000 hours from date of supply (whichever occurs first) and covers against faulty workmanship, materials and design.

Engine

Doosan is the trusted brand when it comes to manufacturing diesel engines for the power industry. Featuring maximum performance, high fuel efficiency and hassle-free systems that will go the distance, Doosan has been producing diesel engines since 1958, and is backed by an unparalleled track record for providing better power, quality and durability. Suitable in either prime or standby applications, you just know they'll keep working day after day.

Control System

The control starting system is fitted standard. Starting is remote or local to the machine with push Start/Stop button and includes the following digital indicators:

- Oil Pressure
- Engine Temperature
- Frequency
- Volts and Amps
- Shut Down for low oil & temperature
- Emergency stop button
- Output circuit breaker
- Static Battery Charger

Can also be configured to operate with an Automatic Transfer Switch with logic.

MODEL: ED470DSE/3

ENGINE SPECIFICATIONS

| | |
|----------------------------------|---------------------------|
| Engine Model | Doosan P158LE |
| Engine Speed | 1500 rpm |
| Cylinders | 8TI |
| Cubic Capacity | 14.6 L |
| Bore/Stroke | 128 x 142 mm |
| Compression Ratio | 15:1 |
| Aspiration | Turbocharged, Intercooled |
| Starter Voltage | 24 V |
| Flywheel (Max. Continuous Power) | 430 kW |
| Combustion Air Flow | 31 m ³ /min |
| Cooling Air flow | 670 m ³ /min |
| Cooling System | Radiator Cooled |
| Heat Rejection to Cooling System | 365 kW |
| Exhaust Gas Flow | 91 m ³ /min |
| Exhaust Gas Temperature | 600 °C |
| Fuel Type | Diesel |
| Fuel Tank Capacity | 600 L |
| Fuel Consumption (Continuous) | 80.3 L/h |
| Fuel Consumption (Standby) | 93 L/h |

Powered by

ALTERNATOR SPECIFICATIONS

| | |
|--------------------|-----------------------------|
| Alternator Model | Crossley SLG Series |
| Electric Power | Three Phase |
| Active Power | 470 kVA at 0.8 pf (Standby) |
| Power | 376 kW |
| Electric Potential | 415 V |
| Frequency | 50 Hz |

These ratings are applicable for supplying continuous electrical power at variable load in the event of a utility power failure. No overload is permitted on these ratings.

GENERATOR SPECIFICATIONS

| | |
|------------------------|-----------------------|
| Dimensions (L x W x H) | 3500 x 1400 x 2100 mm |
| Weight | 3000 kg |

Note: Standby reference conditions 27°C (80°F) air inlet temperature 152.4 m (500ft) ASL. All engine performance data based on the above mentioned maximum continuous ratings. Fuel consumption data at full load with diesel fuel with a specific gravity of 0.85 and conforming to BS29869:1988, Class A2.

Canopy Option (No.6 Canopy)

A weather protective acoustic enclosure may be fitted as an option to protect and prolong the life of your generator. Constructed of galvanised steel sheet that is cleared and finished using a powdercoat paint finish, this acoustic canopy will reduce the noise level of the generating set to approximately 85 dB(A) at 1 metre from the machine (75 dB(A) @ 7 m).

Requires 1100 mm access (width) to open doors, exhaust protrudes 300 mm above the canopy. Canopy Weight: 2050 kg.
Dimensions: 5120 mm (L) x 1660 mm (W) x 2400 mm (H)



Design Features

- Heavy duty fabricated steel baseframe
- Bunded Fuel Tank (AS1940-2004 compliant)
- Battery Charger
- Control Panel with Emergency Stop button
- Prime or Standby Power

Optional Extras

- Additional Protection Alarms
- Jacket Heater
- Automatic Transfer Switch (ATS)
- Control System (remote Start/Stop) with Mains Failure option
- Weather protected acoustic canopy
- Trailer mounted
- Load Banks
- Auxiliary Fuel Tanks
- Genuine Spare Parts

Special Builds Welcome!

Specifications are subject to variation without notice.

VICTORIA NEW SOUTH WALES QUEENSLAND SOUTH AUSTRALIA WESTERN AUSTRALIA

1300 656 276

www.wellcross.com.au