

ELECTRICAL SYSTEM

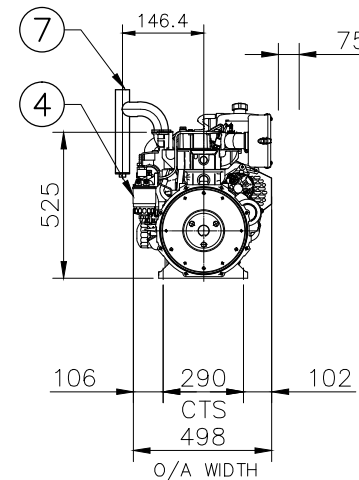
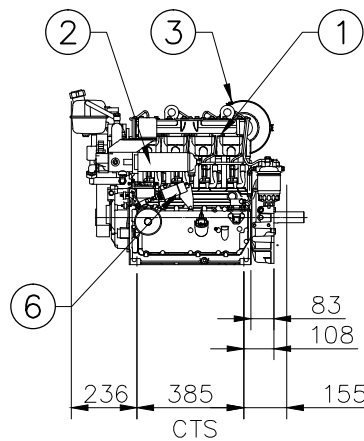
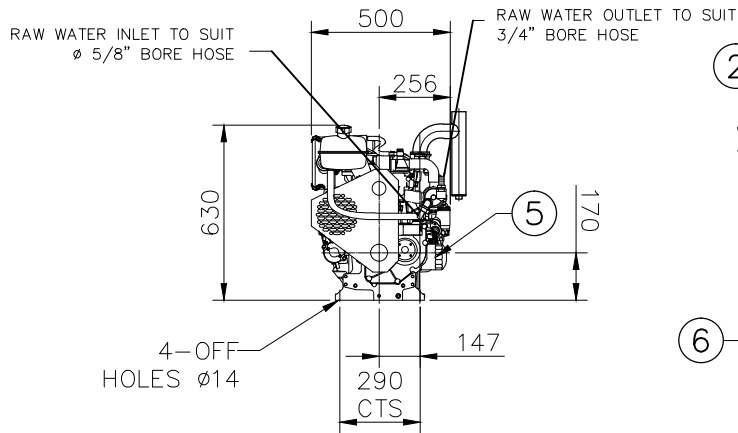
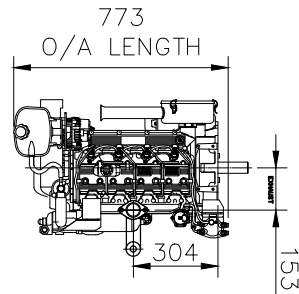
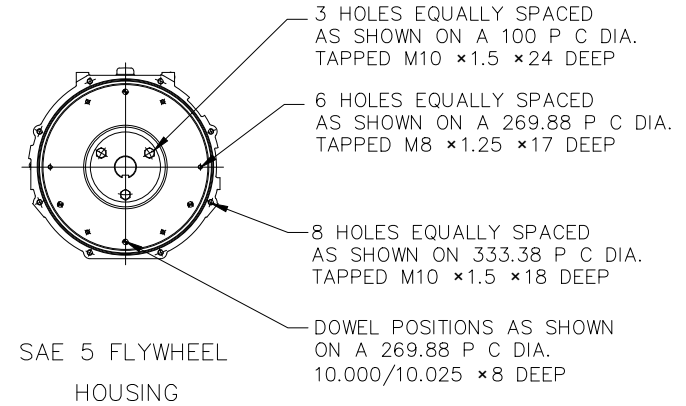
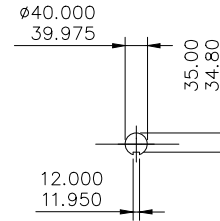
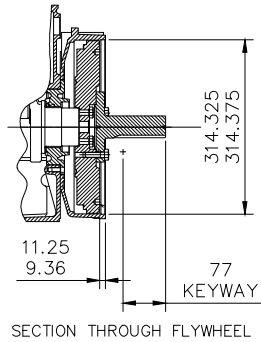
12 VOLT NEGATIVE EARTH
 COLD CRANKING AMPS 116
 FLYWHEEL TEETH 96
 VDO OIL & TEMP SENDERS
 ARE FITTED
 OIL PRESSURE 500Kpa
 WATER TEMP 120°C

OIL SUMP PLUG

IS LOCATED FLUSH WITH
 SUMP BOTTOM.
 LUBE OIL MUST BE DRAINED
 THROUGH DIPSTICK HOLE
 ALTERNATELY DRAIN TO BE
 EXTENDED BY PUMP
 PACKAGER

COOLING WATER FLOW RATE

MINIMUM FLOW RATE IS
 0.3 LITRES PER SECOND @ 20°.
 HIGHER FLOW RATES ARE REQUIRED
 AT HIGHER TEMPERATURES. FAILURE
 TO PROVIDE THIS FLOW RATE WILL
 CAUSE PERMANENT ENGINE FAILURE
 WITHIN MINUTES OF RUNNING THE
 DIESEL ENGINE.



WEIGHT = 210 Kg. APPROX

ITEM	QTY	DESCRIPTION	W&C REF. No.	Wt. Kg.
7	1	WATER TRAP	W&C	-
6	1	SOLENOID	LISTER	-
5	1	OIL FILTER	LISTER	-
4	1	FUEL FILTER	LISTER	-
3	1	AIR FILTER	LISTER	-
2	1	HEAT EXCHANGER	LISTER	-
1	1	LPW4-46 DIESEL ENGINE	LISTER	-

REV.	DESCRIPTION	DRN	DATE	CHK.	DATE.
-	-	-	-	-	-
-	-	-	-	-	-
-	-	-	-	-	-
B	ISSUED FOR MANUFACTURE	P.N.L.	15.06.16	P.M.	15.06.16
A	ISSUED FOR APPROVAL	P.N.L.	15.06.16	P.M.	15.06.16

TO BE MODIFIED ON CAD ONLY DRN. P.N.L. 15.06.16
 DRAWN SCALE : 1:1 CHK. P.M. 15.06.16
 PLOT SCALE : 1:20 @ A3 ENG. L.P. 15.06.16
WELLING & CROSSLEY PTY LTD
 59 EXPORT DRIVE BROOKLYN VIC. 3012
 1042 CANLEY VALE RD, WETHERILL PK NSW 2164
 UNIT 5/235 CAMBOON RD MALAGA WA 6090
 UNIT 11/1909 IPSWICH ROCKLEA QLD 4106
 EMAIL: wellcross@wellcross.com.au

THIS DRAWING AND DESIGN REMAIN THE PROPERTY OF WELLING & CROSSLEY PTY. LTD. A.B.N. 61 005 690 273. THIS DRAWING AND DESIGN CAN NOT BE COPIED OR ALTERED IN ANY WAY WITHOUT PRIOR WRITTEN APPROVAL FROM WELLING & CROSSLEY PTY. LTD. THIS DRAWING AND ALL COPIES, HARD & SOFT MUST BE RETURNED TO WELLING & CROSSLEY PTY. LTD. UPON REQUEST FROM WELLING & CROSSLEY PTY. LTD.

TITLE : FIRE PUMP DIESEL ENGINE
 LPW4-46 LISTER HEAT EXCHANGER
 GENERAL ARRANGEMENT
 DRG No: 20-LPW4-006 A3 REV B