

ELECTRICAL SYSTEM

24 VOLT NEGATIVE EARTH
 COLD CRANKING AMPS 500
 FLYWHEEL TEETH 152
 VDO OIL & TEMP SENDERS
 ARE FITTED
 OIL PRESSURE 1000Kpa
 WATER TEMP 120°C

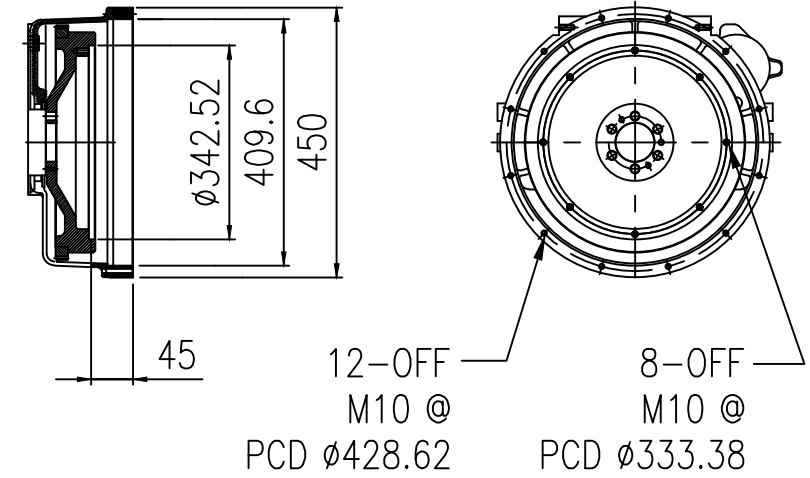
OIL SUMP PLUG

IS LOCATED FLUSH WITH
 SUMP BOTTOM.
 LUBE OIL MUST BE DRAINED
 THROUGH DIPSTICK HOLE
 ALTERNATELY DRAIN TO BE
 EXTENDED BY PUMP
 PACKAGER

COOLING WATER FLOW RATE

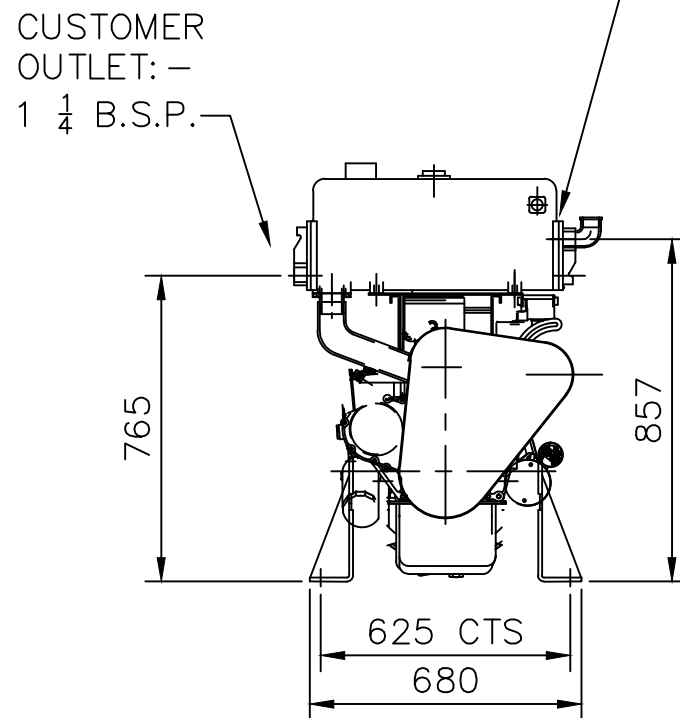
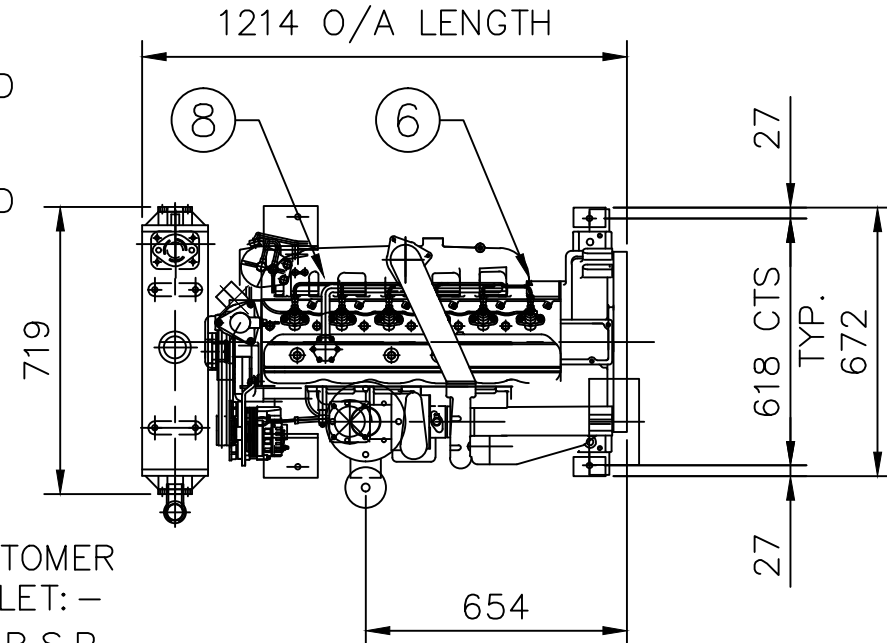
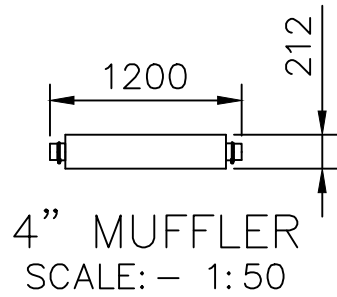
MINIMUM FLOW RATE IS
 1.7 LITRES PER SECOND @ 20°.
 HIGHER FLOW RATES ARE REQUIRED
 AT HIGHER TEMPERATURES.
 FAILURE TO PROVIDE THIS FLOW
 RATE WILL CAUSE PERMANENT ENGINE
 FAILURE WITHIN MINUTES OF RUNNING
 THE DIESEL ENGINE

BELL HOUSING SAE 3
 FLYWHEEL SAE 11 1/2

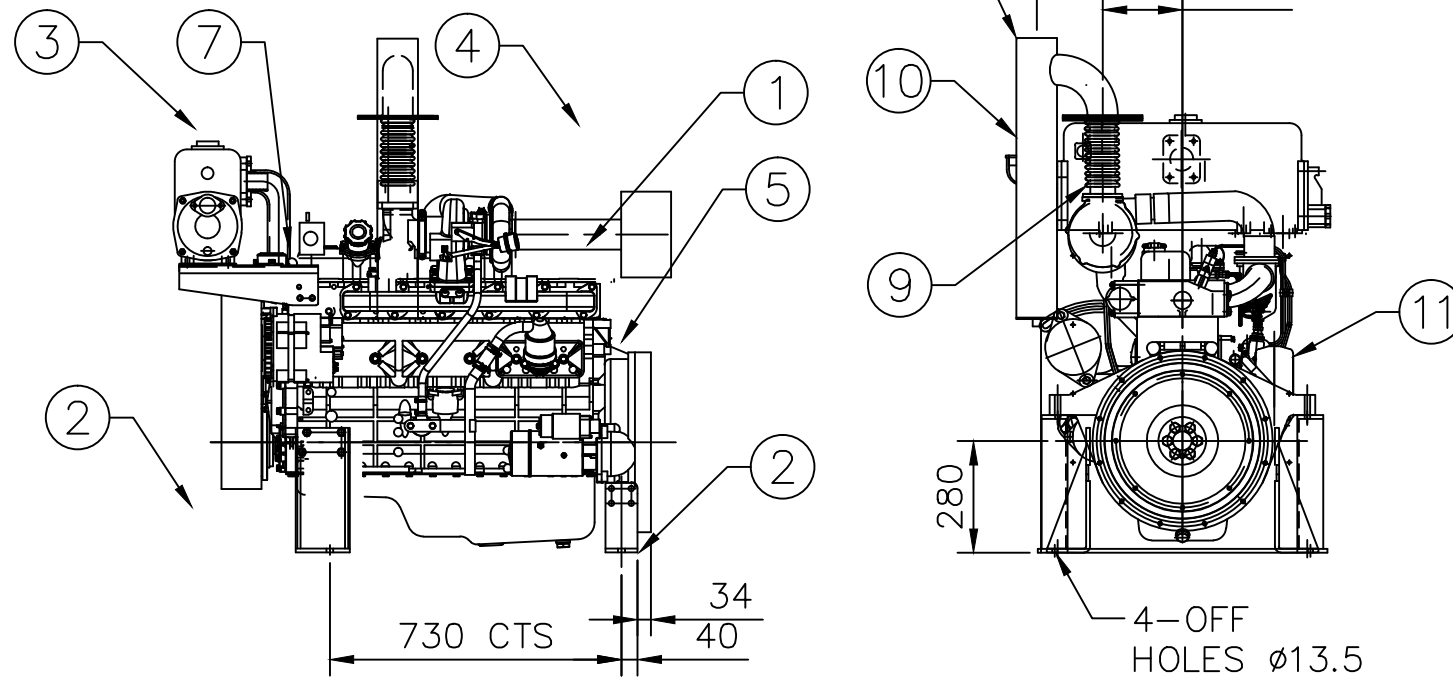


PAINTING / POWDERCOATING

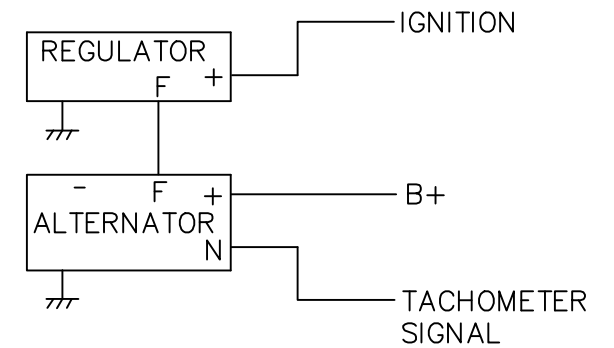
ENGINE: - PAINTED SIGNAL RED
 FEET & PANELS: - POWDER COATED
 SIGNAL RED
 HEAT EXCHANGER: - PAINTED SIGNAL RED
 MUFFLER: - HIGH TEMP SILVER



CUSTOMER
 OUTLET: -
 1 1/4 B.S.P.



ALTERNATOR WIRING



TOTAL WEIGHT = 700 Kg.

| ITEM | QTY | DESCRIPTION | W&C REF. No. | Wt. Kg. |
|------|-----|--------------------------|--------------|---------|
| 11 | 1 | OIL FILTER | W&C | - |
| 10 | 1 | WATER TRAP | W&C | - |
| 9 | 1 | EXHAUST FLEX. | W&C | - |
| 8 | 1 | OIL PRESSURE SENDER | VDO | - |
| 7 | 1 | TEMP SENDER | VDO | - |
| 6 | 1 | FUEL SOLENOID | W&C | - |
| 5 | 1 | MAGNETIC SPEED PICKUP | W&C | - |
| 4 | 1 | AIR CLEANER | W&C | - |
| 3 | 1 | HEAT EXCHANGER | 400CH | - |
| 2 | 1 | SUPPORT FEET & PANELS | W&C | - |
| 1 | 1 | CD6102BZSS DIESEL ENGINE | CROSSLEY | - |

| REV. | DESCRIPTION | DRN | DATE | CHK. | DATE. |
|------|------------------------|--------|----------|--------|----------|
| - | - | - | - | - | - |
| - | - | - | - | - | - |
| - | - | - | - | - | - |
| B | ISSUED FOR MANUFACTURE | P.S.M. | 24.06.15 | P.N.L. | 24.06.15 |
| A | ISSUED FOR APPROVAL | P.S.M. | 24.06.15 | P.N.L. | 24.06.15 |

TO BE MODIFIED ON CAD ONLY DRN. P.S.M. 24.06.15
 SCALE :1:20 CHK. P.N.L. 24.06.15
 PLOT SCALE :1:20 @ A3 ENG. P.N.L. 24.06.15
WELLING & CROSSLEY PTY LTD
 59 EXPORT DRIVE BROOKLYN VIC. 3012
 UNIT 2/1040 WETHERILL PK NSW 2164
 UNIT 5/235 CAMBOON RD MALAGA WA 6090
 UNIT 11/1909 IPSWICH ROCKLEA QLD 4106
 EMAIL: wellcross@wellcross.com.au

THIS DRAWING AND DESIGN REMAIN THE PROPERTY OF
 WELLING & CROSSLEY PTY. LTD. A.B.N. 61 005 690 273.
 THIS DRAWING AND DESIGN CAN NOT BE COPIED OR
 ALTERED IN ANY WAY WITHOUT PRIOR WRITTEN
 APPROVAL FROM WELLING & CROSSLEY PTY. LTD.
 THIS DRAWING AND ALL COPIES, HARD & SOFT MUST BE
 RETURNED TO WELLING & CROSSLEY PTY. LTD. UPON
 REQUEST FROM WELLING & CROSSLEY PTY. LTD.

TITLE : FIRE PUMP DIESEL ENGINE
 6102T2 CROSSLEY HEAT
 EXCHANGER GENERAL ARRANGEMENT
 DRG No: 20-6102T2-006 A3 REV B